

JUL 09 2018

Approved

<u>REQUEST FOR AGENDA PLACEMENT FORM</u>	
Submission Deadline - Tuesday, 12:00 PM before Court Dates	
SUBMITTED BY: David Disheroon TODAY'S DATE: 06/26/2018	
<u>DEPARTMENT:</u>	<u>Public Works</u>
<u>SIGNATURE OF DEPARTMENT HEAD:</u> _____	
<u>REQUESTED AGENDA DATE:</u>	<u>07/09/2018</u>

SPECIFIC AGENDA WORDING: Consideration of final plat for The Retreat Phase 13, Lots 5-15 Block 58 and Lots 12-17 Block 60, in Precinct 1 -Public Works Department

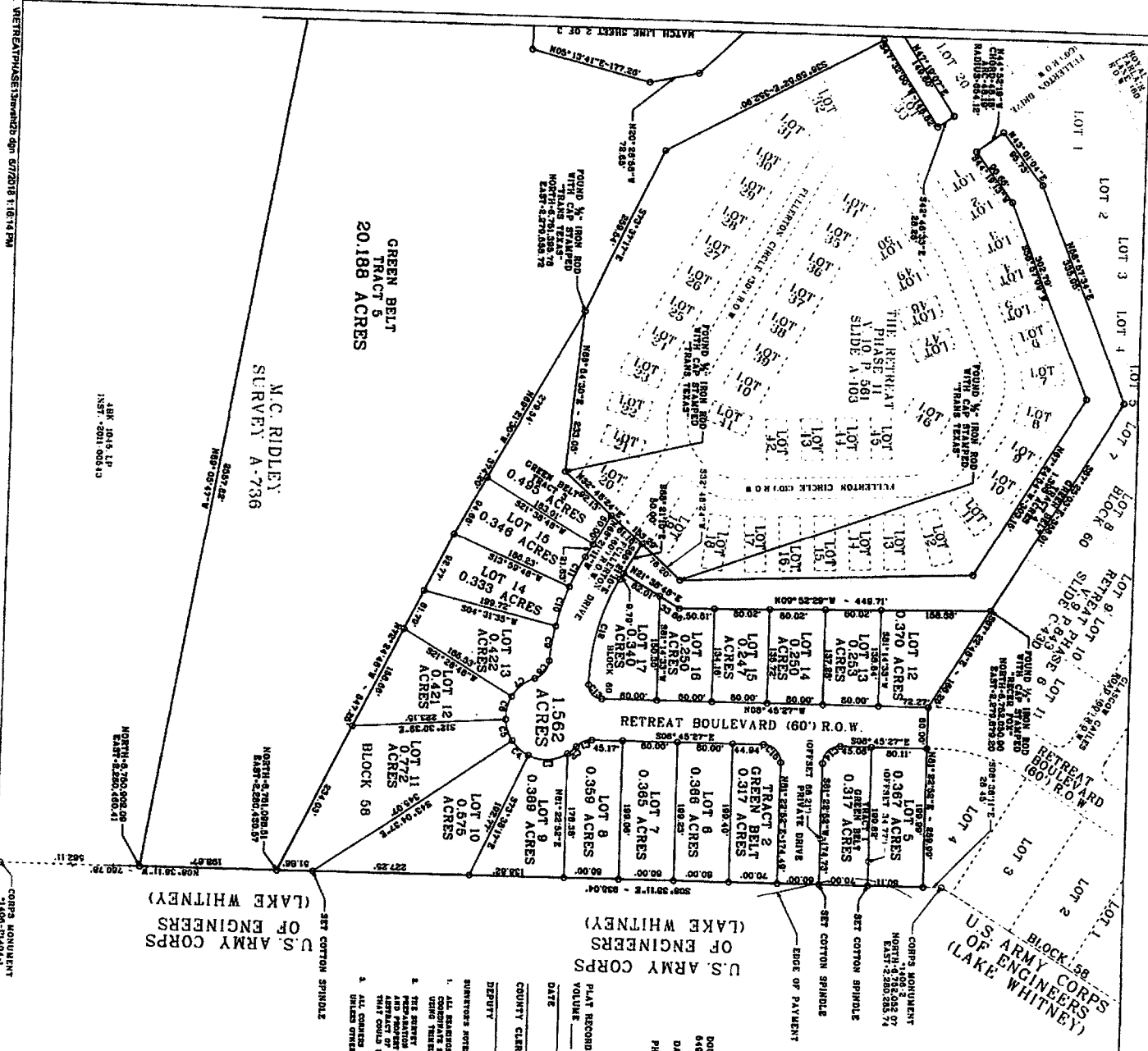
<u>PERSON(S) TO PRESENT ITEM:</u> David Disheroon	
SUPPORT MATERIAL: (Must enclose supporting documentation)	
TIME: 10 minutes (Anticipated number of minutes needed to discuss item)	ACTION ITEM: <u> X </u> WORKSHOP _____ CONSENT: _____ EXECUTIVE: _____
<u>STAFF NOTICE:</u>	
COUNTY ATTORNEY: _____	IT DEPARTMENT: _____
AUDITOR: _____	PURCHASING DEPARTMENT: _____
PERSONNEL: _____	PUBLIC WORKS: <u> X </u>
BUDGET COORDINATOR: _____	OTHER: _____

*****This Section to be Completed by County Judge's Office*****

ASSIGNED AGENDA DATE: _____

REQUEST RECEIVED BY COUNTY JUDGE'S OFFICE _____

COURT MEMBER APPROVAL _____ Date _____



GREEN BELT TRACT 5
20.188 ACRES

M.C. RIDLEY
SURVEY A-736

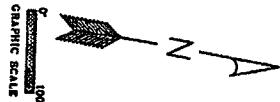
APR 2016 L.P.
15371-2011-000310

U.S. ARMY CORPS OF ENGINEERS (LAKE WHITNEY)
SET COTTON SPINDLE

U.S. ARMY CORPS OF ENGINEERS (LAKE WHITNEY)
EDGE OF PAYMENT

OWNER:
DOUBLE DIAMOND INC.
6400 BELT LINE ROAD,
DALLAS, TEXAS 75244
PHONE (214) 706-9901

LINE	BEARING	CHORD	ARC	STARTING	ENDING
1	S 89° 45' 00" W	64.38	63.11°	50.00	50.00
2	S 89° 45' 00" W	64.38	63.11°	50.00	50.00
3	S 89° 45' 00" W	64.38	63.11°	50.00	50.00
4	S 89° 45' 00" W	64.38	63.11°	50.00	50.00
5	S 89° 45' 00" W	64.38	63.11°	50.00	50.00
6	S 89° 45' 00" W	64.38	63.11°	50.00	50.00
7	S 89° 45' 00" W	64.38	63.11°	50.00	50.00
8	S 89° 45' 00" W	64.38	63.11°	50.00	50.00
9	S 89° 45' 00" W	64.38	63.11°	50.00	50.00
10	S 89° 45' 00" W	64.38	63.11°	50.00	50.00
11	S 89° 45' 00" W	64.38	63.11°	50.00	50.00
12	S 89° 45' 00" W	64.38	63.11°	50.00	50.00
13	S 89° 45' 00" W	64.38	63.11°	50.00	50.00
14	S 89° 45' 00" W	64.38	63.11°	50.00	50.00
15	S 89° 45' 00" W	64.38	63.11°	50.00	50.00
16	S 89° 45' 00" W	64.38	63.11°	50.00	50.00
17	S 89° 45' 00" W	64.38	63.11°	50.00	50.00
18	S 89° 45' 00" W	64.38	63.11°	50.00	50.00
19	S 89° 45' 00" W	64.38	63.11°	50.00	50.00
20	S 89° 45' 00" W	64.38	63.11°	50.00	50.00
21	S 89° 45' 00" W	64.38	63.11°	50.00	50.00
22	S 89° 45' 00" W	64.38	63.11°	50.00	50.00
23	S 89° 45' 00" W	64.38	63.11°	50.00	50.00
24	S 89° 45' 00" W	64.38	63.11°	50.00	50.00
25	S 89° 45' 00" W	64.38	63.11°	50.00	50.00
26	S 89° 45' 00" W	64.38	63.11°	50.00	50.00
27	S 89° 45' 00" W	64.38	63.11°	50.00	50.00
28	S 89° 45' 00" W	64.38	63.11°	50.00	50.00
29	S 89° 45' 00" W	64.38	63.11°	50.00	50.00
30	S 89° 45' 00" W	64.38	63.11°	50.00	50.00
31	S 89° 45' 00" W	64.38	63.11°	50.00	50.00
32	S 89° 45' 00" W	64.38	63.11°	50.00	50.00
33	S 89° 45' 00" W	64.38	63.11°	50.00	50.00
34	S 89° 45' 00" W	64.38	63.11°	50.00	50.00
35	S 89° 45' 00" W	64.38	63.11°	50.00	50.00
36	S 89° 45' 00" W	64.38	63.11°	50.00	50.00
37	S 89° 45' 00" W	64.38	63.11°	50.00	50.00
38	S 89° 45' 00" W	64.38	63.11°	50.00	50.00
39	S 89° 45' 00" W	64.38	63.11°	50.00	50.00
40	S 89° 45' 00" W	64.38	63.11°	50.00	50.00
41	S 89° 45' 00" W	64.38	63.11°	50.00	50.00
42	S 89° 45' 00" W	64.38	63.11°	50.00	50.00
43	S 89° 45' 00" W	64.38	63.11°	50.00	50.00
44	S 89° 45' 00" W	64.38	63.11°	50.00	50.00
45	S 89° 45' 00" W	64.38	63.11°	50.00	50.00
46	S 89° 45' 00" W	64.38	63.11°	50.00	50.00
47	S 89° 45' 00" W	64.38	63.11°	50.00	50.00
48	S 89° 45' 00" W	64.38	63.11°	50.00	50.00
49	S 89° 45' 00" W	64.38	63.11°	50.00	50.00
50	S 89° 45' 00" W	64.38	63.11°	50.00	50.00
51	S 89° 45' 00" W	64.38	63.11°	50.00	50.00
52	S 89° 45' 00" W	64.38	63.11°	50.00	50.00
53	S 89° 45' 00" W	64.38	63.11°	50.00	50.00
54	S 89° 45' 00" W	64.38	63.11°	50.00	50.00
55	S 89° 45' 00" W	64.38	63.11°	50.00	50.00
56	S 89° 45' 00" W	64.38	63.11°	50.00	50.00
57	S 89° 45' 00" W	64.38	63.11°	50.00	50.00
58	S 89° 45' 00" W	64.38	63.11°	50.00	50.00
59	S 89° 45' 00" W	64.38	63.11°	50.00	50.00
60	S 89° 45' 00" W	64.38	63.11°	50.00	50.00
61	S 89° 45' 00" W	64.38	63.11°	50.00	50.00
62	S 89° 45' 00" W	64.38	63.11°	50.00	50.00
63	S 89° 45' 00" W	64.38	63.11°	50.00	50.00
64	S 89° 45' 00" W	64.38	63.11°	50.00	50.00
65	S 89° 45' 00" W	64.38	63.11°	50.00	50.00
66	S 89° 45' 00" W	64.38	63.11°	50.00	50.00
67	S 89° 45' 00" W	64.38	63.11°	50.00	50.00
68	S 89° 45' 00" W	64.38	63.11°	50.00	50.00
69	S 89° 45' 00" W	64.38	63.11°	50.00	50.00
70	S 89° 45' 00" W	64.38	63.11°	50.00	50.00
71	S 89° 45' 00" W	64.38	63.11°	50.00	50.00
72	S 89° 45' 00" W	64.38	63.11°	50.00	50.00
73	S 89° 45' 00" W	64.38	63.11°	50.00	50.00
74	S 89° 45' 00" W	64.38	63.11°	50.00	50.00
75	S 89° 45' 00" W	64.38	63.11°	50.00	50.00
76	S 89° 45' 00" W	64.38	63.11°	50.00	50.00
77	S 89° 45' 00" W	64.38	63.11°	50.00	50.00
78	S 89° 45' 00" W	64.38	63.11°	50.00	50.00
79	S 89° 45' 00" W	64.38	63.11°	50.00	50.00
80	S 89° 45' 00" W	64.38	63.11°	50.00	50.00
81	S 89° 45' 00" W	64.38	63.11°	50.00	50.00
82	S 89° 45' 00" W	64.38	63.11°	50.00	50.00
83	S 89° 45' 00" W	64.38	63.11°	50.00	50.00
84	S 89° 45' 00" W	64.38	63.11°	50.00	50.00
85	S 89° 45' 00" W	64.38	63.11°	50.00	50.00
86	S 89° 45' 00" W	64.38	63.11°	50.00	50.00
87	S 89° 45' 00" W	64.38	63.11°	50.00	50.00
88	S 89° 45' 00" W	64.38	63.11°	50.00	50.00
89	S 89° 45' 00" W	64.38	63.11°	50.00	50.00
90	S 89° 45' 00" W	64.38	63.11°	50.00	50.00
91	S 89° 45' 00" W	64.38	63.11°	50.00	50.00
92	S 89° 45' 00" W	64.38	63.11°	50.00	50.00
93	S 89° 45' 00" W	64.38	63.11°	50.00	50.00
94	S 89° 45' 00" W	64.38	63.11°	50.00	50.00
95	S 89° 45' 00" W	64.38	63.11°	50.00	50.00
96	S 89° 45' 00" W	64.38	63.11°	50.00	50.00
97	S 89° 45' 00" W	64.38	63.11°	50.00	50.00
98	S 89° 45' 00" W	64.38	63.11°	50.00	50.00
99	S 89° 45' 00" W	64.38	63.11°	50.00	50.00
100	S 89° 45' 00" W	64.38	63.11°	50.00	50.00



PLAY RECORDED IN VOLUME _____ PAGE _____ SLIDE _____

DATE _____

NOTES:
SHOW-AS-BUILT INFORMATION
ALL SURVEY TO BE RECORDED
ON FILE AND MAINTAINED

COUNTY CLERK, JOHNSON COUNTY, TEXAS

DEPUTY _____

WITNESSES' SIGNS

1. ALL MEASUREMENTS AND DISTANCES ARE BASED ON THE TEXAS STATE PLANE USING THE NAD 83 DATUM.

2. THE SURVEY WAS CONDUCTED ON THE CORNER OF THE SUBJECT PROPERTY AND THE PREPARATION OF A CERTIFICATE OF SURVEY FOR THIS FINAL PLAT AND PROPERTY INFORMATION WERE PROVIDED WITHOUT REGARD TO ANY OTHER PLAT THAT COULD BE IN THE PUBLIC RECORD OR OTHERWISE ON OTHER MATTERS THAT COULD BE IN THE PUBLIC RECORD OR OTHERWISE ON OTHER MATTERS.

3. ALL CORNERS ARE 1/2" X 1/2" IRON RODS SET WITH CAP STAMPED INCE S.A.L.S. 4/18

4. ALL CORNERS ARE 1/2" X 1/2" IRON RODS SET WITH CAP STAMPED INCE S.A.L.S. 4/18

FINAL PLAT SHOWING
THE RETREAT PHASE 13
LOTS 6, 7, 8, 9, 10, 11, 12, 13, 14, 15, BLOCK 58
LOTS 12, 13, 14, 15, 16, 17, BLOCK 60,
SUBDIVISION IN
JOHNSON COUNTY, TEXAS
BEING 30.702 ACRES OF LAND LYING AND SITUATED
M.C. RIDLEY SURVEY A-736
J.H. DILLARD SURVEY A-228
JOHNSON COUNTY, TEXAS.
SHEET 2 OF 3

INCE SURVEYING & ENGINEERING
184 THOUSAND OAKS DRIVE WHITNEY, TEXAS 76892
PHONE: 254-694-7708
FAX: 254-694-7230
FIRM #10068000
SCALE 1"=100'
APRIL 06, 2018
SURVEY NO. 201804061

